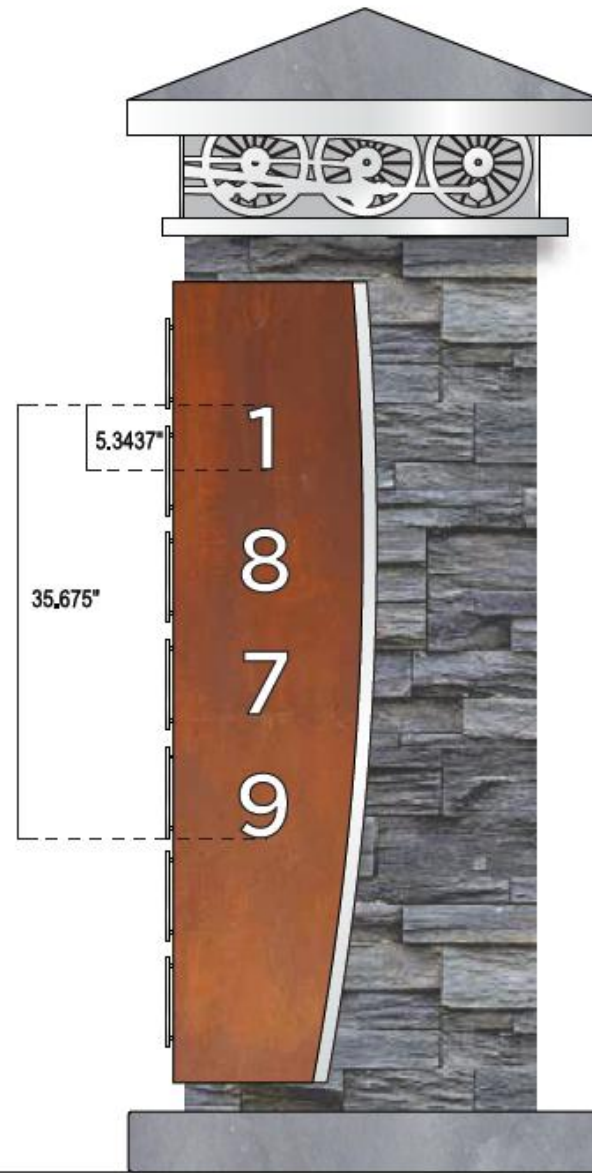


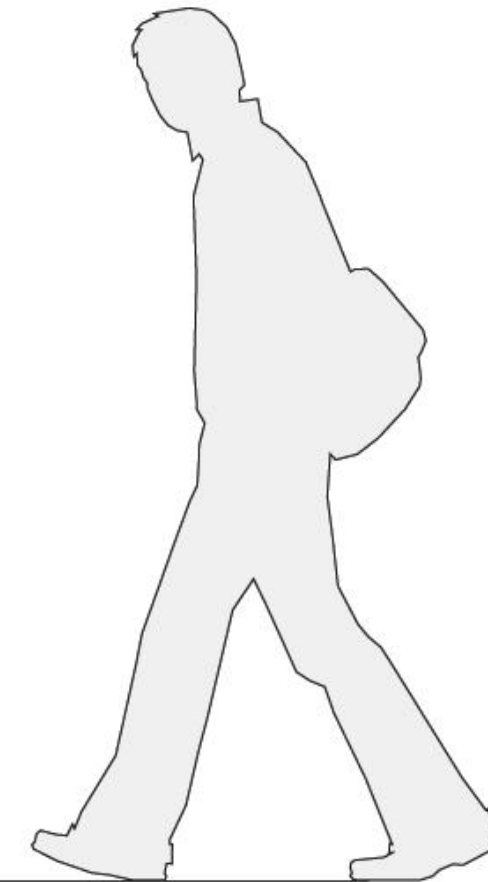
(FRONT VIEW)



(SIDE VIEW)



(BACK VIEW)



Project: Herndon Town Signage

Client: Town of Herndon
Project Admin.: Neil Quimby
Design/Manage: Karolina Bassi & Chris
Whitmore
Number:
Date: 11.25.13

Scale: .0625" = 1"

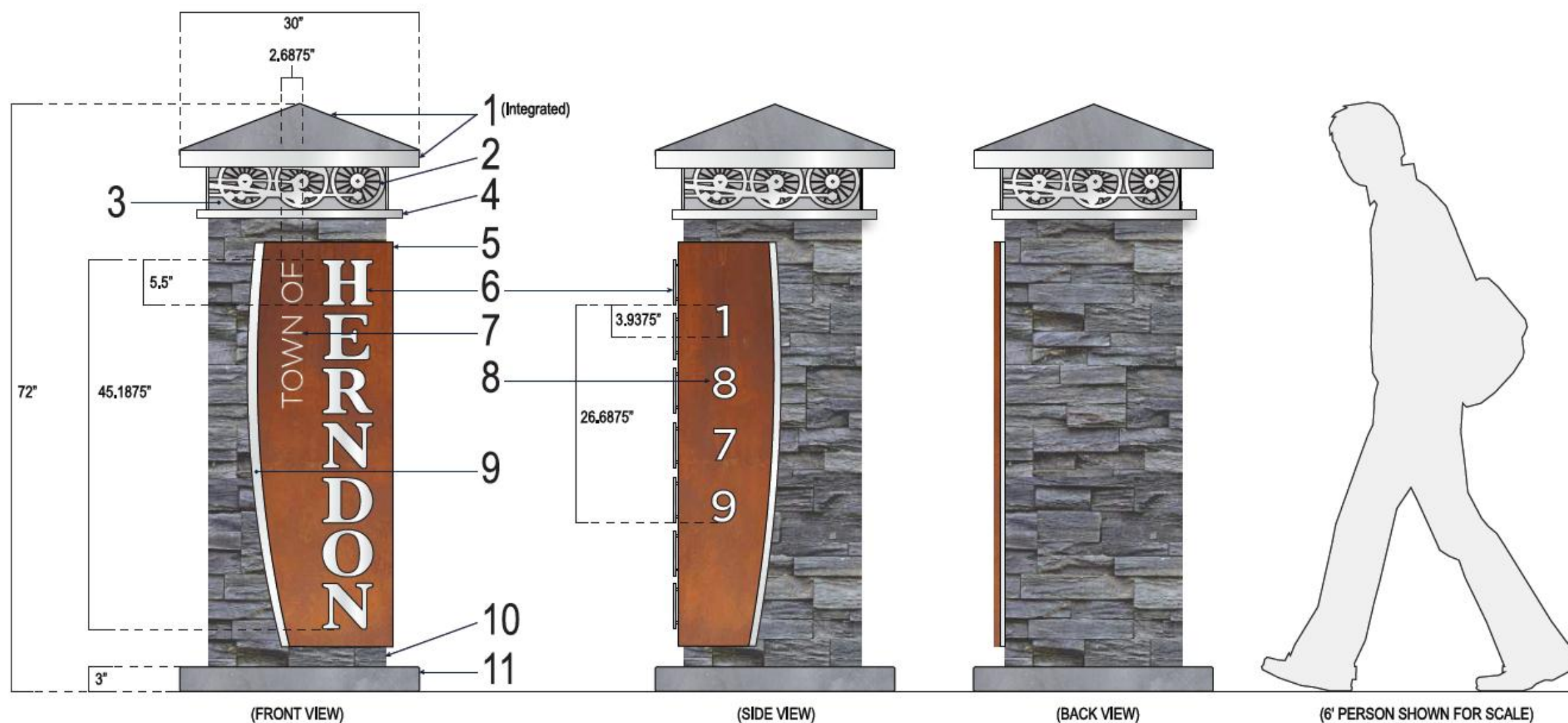
Large Gateway

NOTICE OF CONFIDENTIALITY OF DESIGNS AND DRAWINGS: All designs and drawings prepared by Acorn Sign Graphics are the sole property of Acorn Sign Graphics and all design, manufacturing, reproduction, use and sales rights regarding the same are expressly forbidden. Design/drawings are submitted under a confidential relationship, for a special purpose, and the recipient by accepting the design/drawings assumes custody and agrees that these will not be reproduced or copied in whole or in part, nor the contents revealed in any manner or to any person except for the purpose for which it was tendered, nor any special features peculiar to this design be incorporated in other projects.

Project: Herndon Town Signage

Client: Town of Herndon
Project Admin.: Neil Quimby
Design/Manage: Karolina Bassi & Chris
Whitmore
Number:
Date: 11.25.13

Scale: .0625" = 1"



MATERIALS:

- 1: Aluminum cap with textured stone finish and brushed aluminum dimensional ledge
- 2: Dimensional brushed aluminum graphic element
- 3: Aluminum cabinet; Painted a slightly darker metallic than graphic element
- 4: Integrated brushed aluminum ledge
- 5: Corten front panel flush mounted to aluminum back panel
- 6: Brushed aluminum or stainless steel halo-lit dimensional letters
- 7: Brushed aluminum or stainless steel dimensional letters
- 8: Cut-through letters to reveal brushed aluminum back panel
- 9: Brushed aluminum back panel
- 10: Ledge stone
11. Smooth sealed concrete base with .25" rounded edges

Small Gateway

NOTICE OF CONFIDENTIALITY OF DESIGNS AND DRAWINGS: All designs and drawings prepared by Acorn Sign Graphics are the sole property of Acorn Sign Graphics and all design, manufacturing, reproduction, use and sales rights regarding the same are expressly forbidden. Design/drawings are submitted under a confidential relationship, for a special purpose, and the recipient by accepting the design/drawings assumes custody and agrees that these will not be reproduced or copied in whole or in part, nor the contents revealed in any manner or to any person except for the purpose for which it was tendered, nor any special features peculiar to this design be incorporated in other projects.